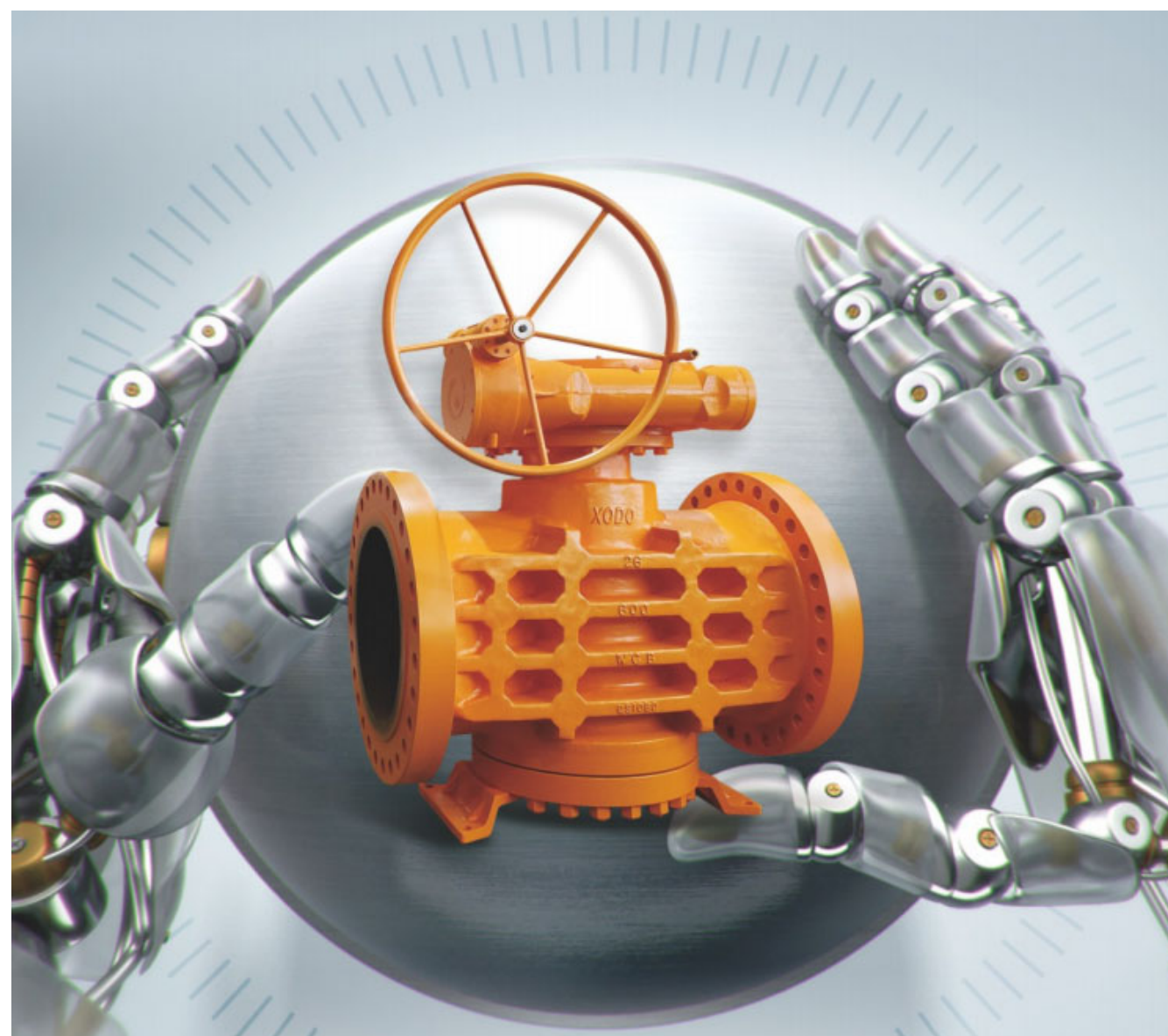


ZHEJIANG XUANDONG VALVE CO., LTD

PLUG VALVE MANUFACTURING





浙江旋东阀门有限公司
Zhejiang Xuandong Valve Co.,Ltd.



American Petroleum Institute



2018-151 | Digital

Certificate of Authority to use the Official API Monogram

License Number: 6D-1877 **ORIGINAL**

The American Petroleum Institute hereby grants to

ZHEJIANG XUANDONG VALVE CO.,LTD.
Heyi Village, Dongou Street, Yongjia County
Wenzhou, Zhejiang
People's Republic of China

the right to use the Official API Monogram® on manufactured products under the conditions in the official publications of the American Petroleum Institute entitled API Spec Q1® and **API-6D** and in accordance with the provisions of the License Agreement.

In all cases where the Official API Monogram is applied, the API Monogram shall be used in conjunction with this certificate number: **6D-1877**

The American Petroleum Institute reserves the right to revoke this authorization to use the Official API Monogram for any reason satisfactory to the Board of Directors of the American Petroleum Institute.

The scope of this license includes the following: Plug Valves, Ball Valves

QMS Exclusions: No Exclusions Identified as Applicable

Effective Date: OCTOBER 14, 2022
Expiration Date: MAY 16, 2025

Anchal Liddar
Senior Vice President of Global Industry Services

To verify the authenticity of this license, go to www.api.org/compositelist.

ZERTIFIKAT ◆ CERTIFICATE ◆ CERTIFICADO ◆ CERTIFICAT ◆ CERTIFIKAT ◆ 認證證書 ◆ CERTIFICATE ◆ CERTIFICADO ◆ CERTIFICAT ◆ CERTIFIKAT



CERTIFICATE

The Certification Body of
TÜV SÜD Industrie Service GmbH,
a Notified Body of the Pressure Equipment Directive (PED),

certifies that

Zhejiang Xuandong Valve Co., Ltd.
No.12, Jiaotou Road, Heyi Industrial Zone, Oubei Town, Yongjia County, PC: 325105, Wenzhou City, Zhejiang Province, P. R. China

implemented, operates and maintains a quality assurance system as described in the Pressure Equipment Directive 2014/68/EU Annex III, Module H

for the scope of

Design, manufacture and sales of steel valves

gate valves (max. DN500, max. PN160)
globe valves (max. DN500, max. PN160)
plug valves (max. DN900, max. PN420)

The audit with the report number Q-CHN-PED-5010357599-001-20 proves that the quality assurance system fulfils the PED requirements.

The manufacturer is authorized to provide the pressure equipment produced within the scope of the assessed quality assurance system with the following Notified Body number:

CE 0036

Certificate No.: DGR-0036-QS-1254-20
valid until July 12th, 2023
provided that annual surveillance audits have been performed successfully
Filderstadt, August 21st, 2020

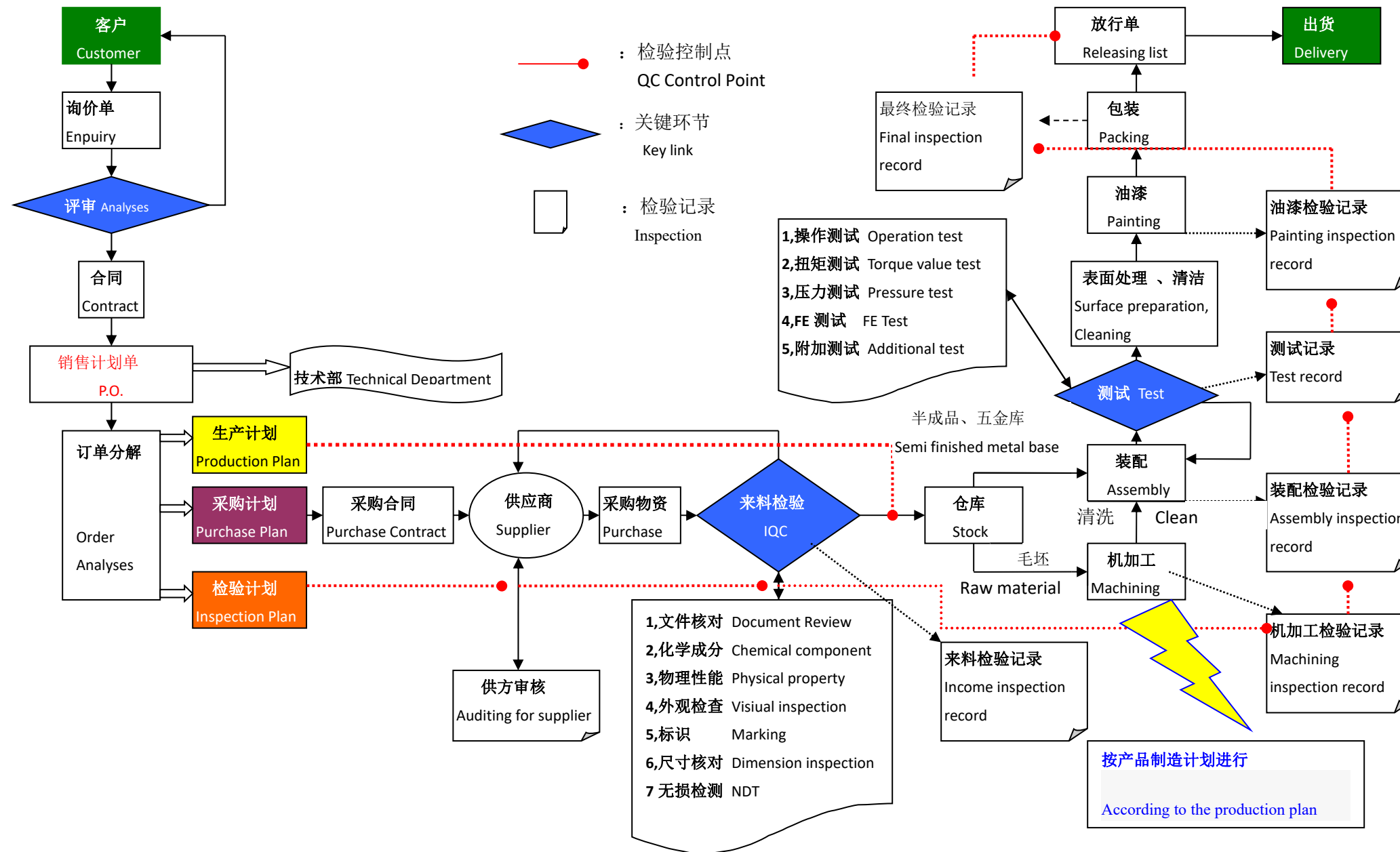
TÜV SÜD Industrie Service GmbH
Westendstraße 199
80686 München
Germany

M. John
Notified Body No.: 0036
Tel: +49 711 70 05 289
Fax: +49 711 70 05 582
e-mail: marina.john@tuv-sued.de



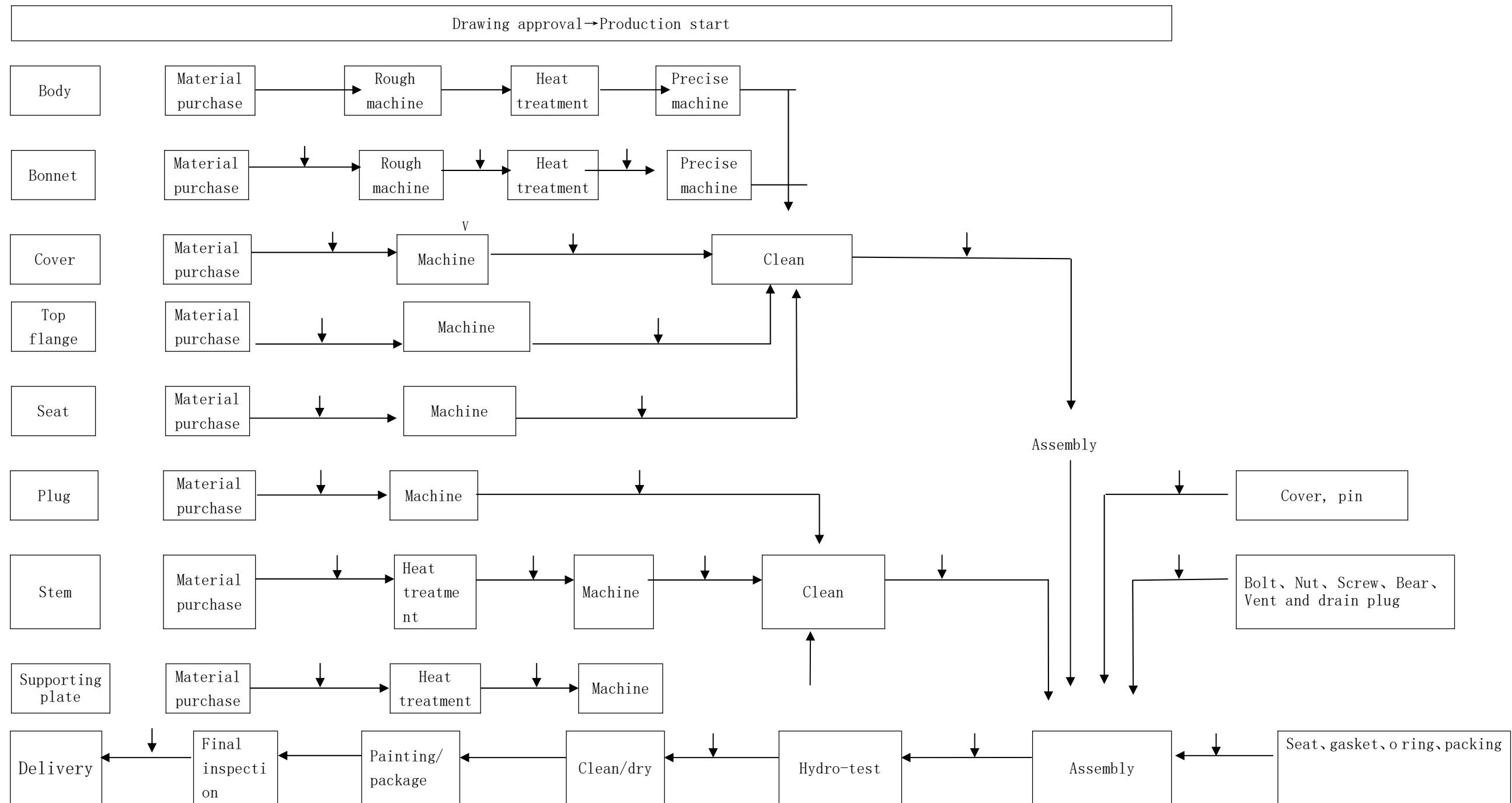
工作流程及质量控制点分布图

Distribution chart of work procedure and quality control point

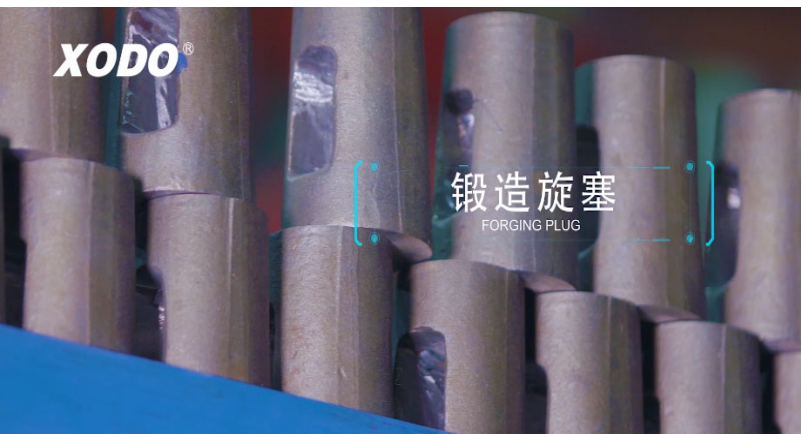


Production process of Plug valve

Zhejiang Xuandong Valve Co.,Ltd.



1. Incoming Raw material Forging and Casting.



Incoming Raw Material Inspection.

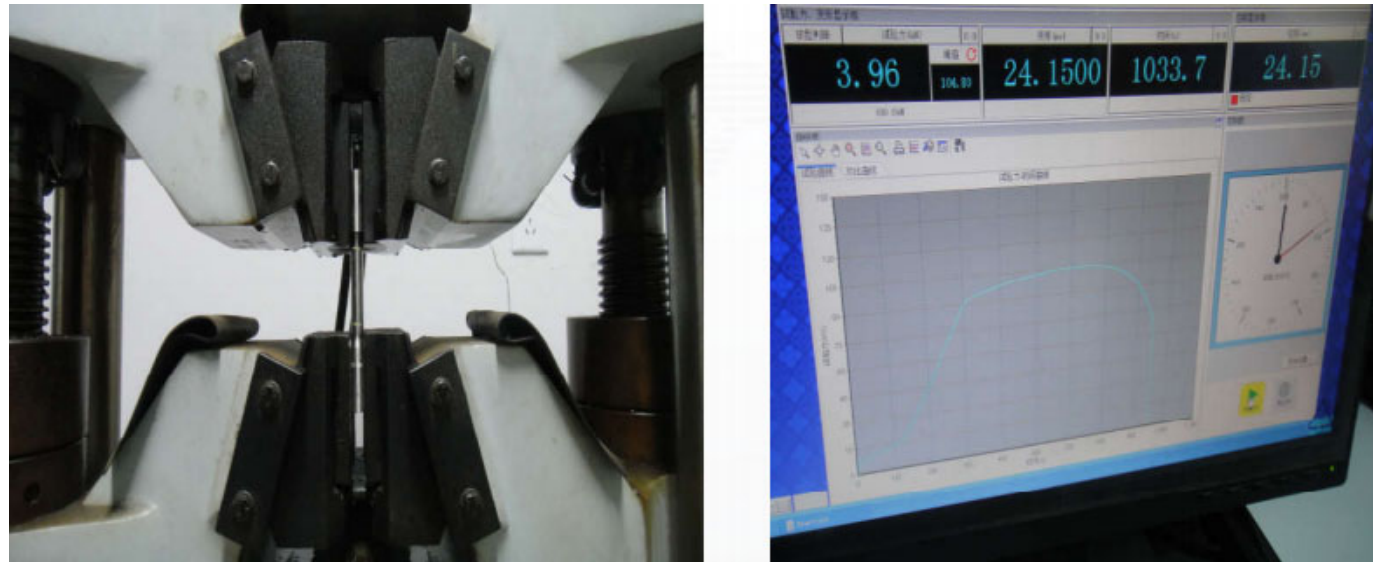


PMI Testing.



Element	SI	Mn	P	S	Cr	Mo	Ni	Al
C	0.052	0.96	1.58	0.013	0.0022	18.28	2.15	10.81
V	0.053	0.96	1.58	0.013	0.0022	18.28	2.15	10.81
Si	0.0000	0.0000	0.0000	0.0000	0.0000	0.0000	0.0000	0.0000
Co	0.10	0.18	0.26	0.028	0.028	0.028	0.028	0.028
Al	0.10	0.18	0.26	0.028	0.028	0.028	0.028	0.028
W	0.0000	0.0000	0.0000	0.0000	0.0000	0.0000	0.0000	0.0000
Fe	0.0000	0.0000	0.0000	0.0000	0.0000	0.0000	0.0000	0.0000
B	0.0000	0.0000	0.0000	0.0000	0.0000	0.0000	0.0000	0.0000
Wt%	65.3							
V	-0.0000	65.3						
Si	0.0000	0.0000						
Fe	0.0000	0.0000						

Tensile Testing.



Impact notch detector and Vickers hardness testing.



PT.



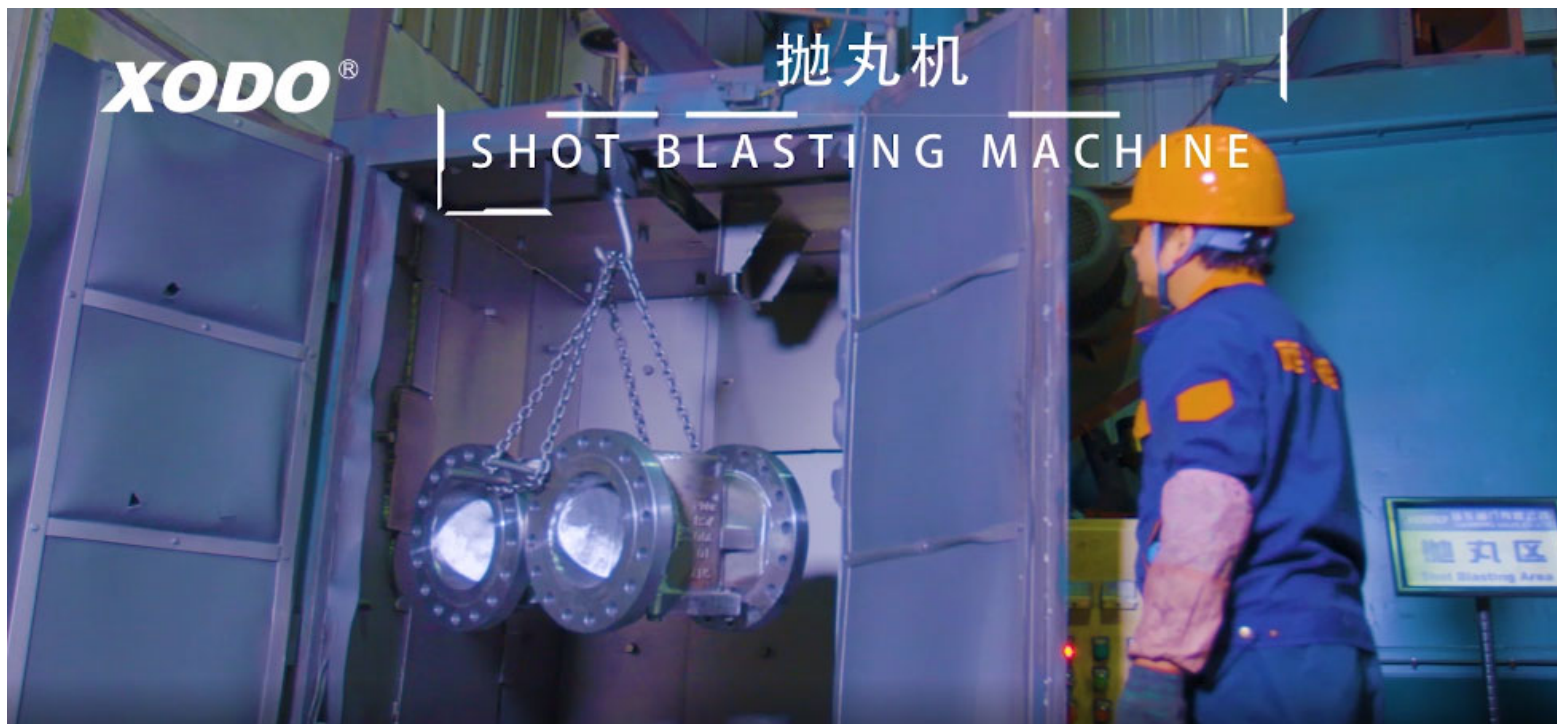
Part Rejection Area.



Parts Rejection with NCR Report and Marking



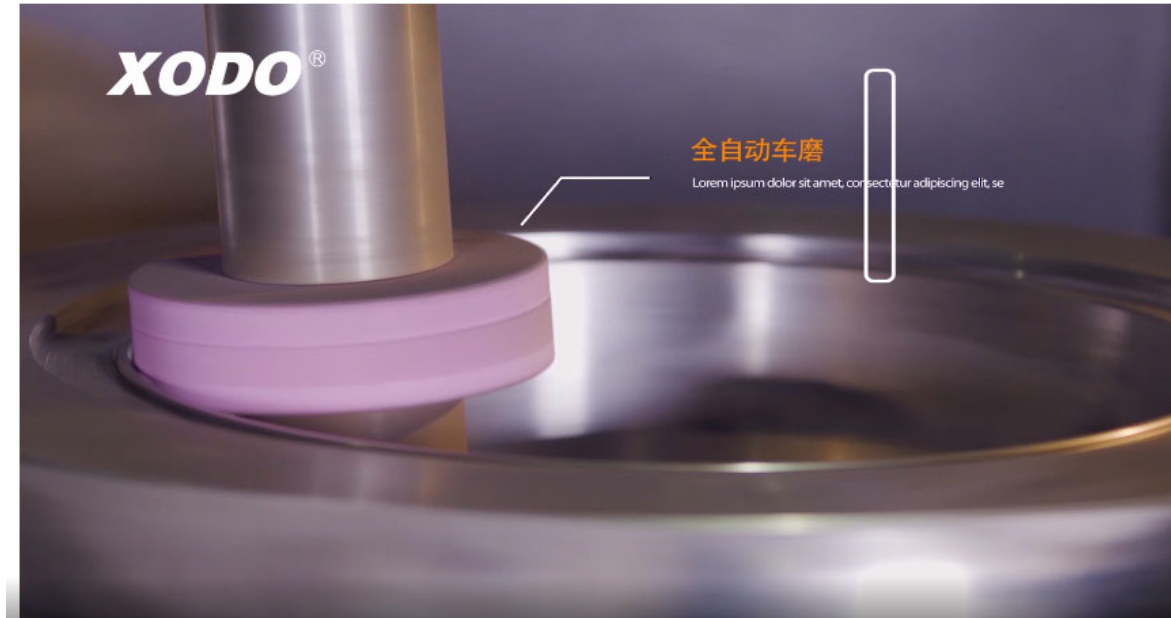
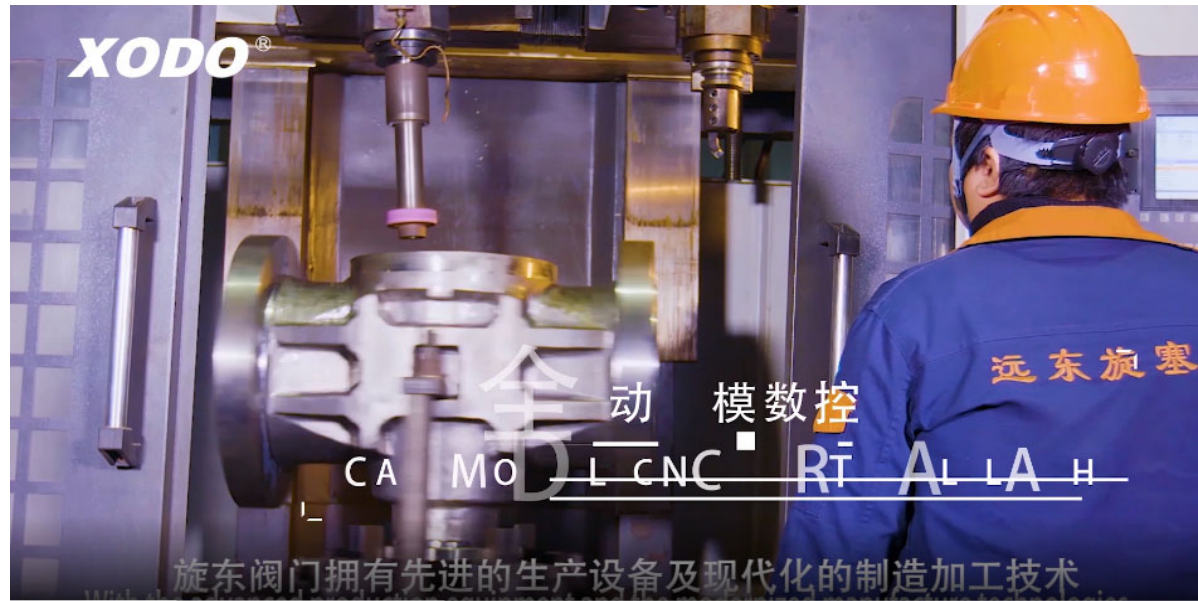
Valve Blasting

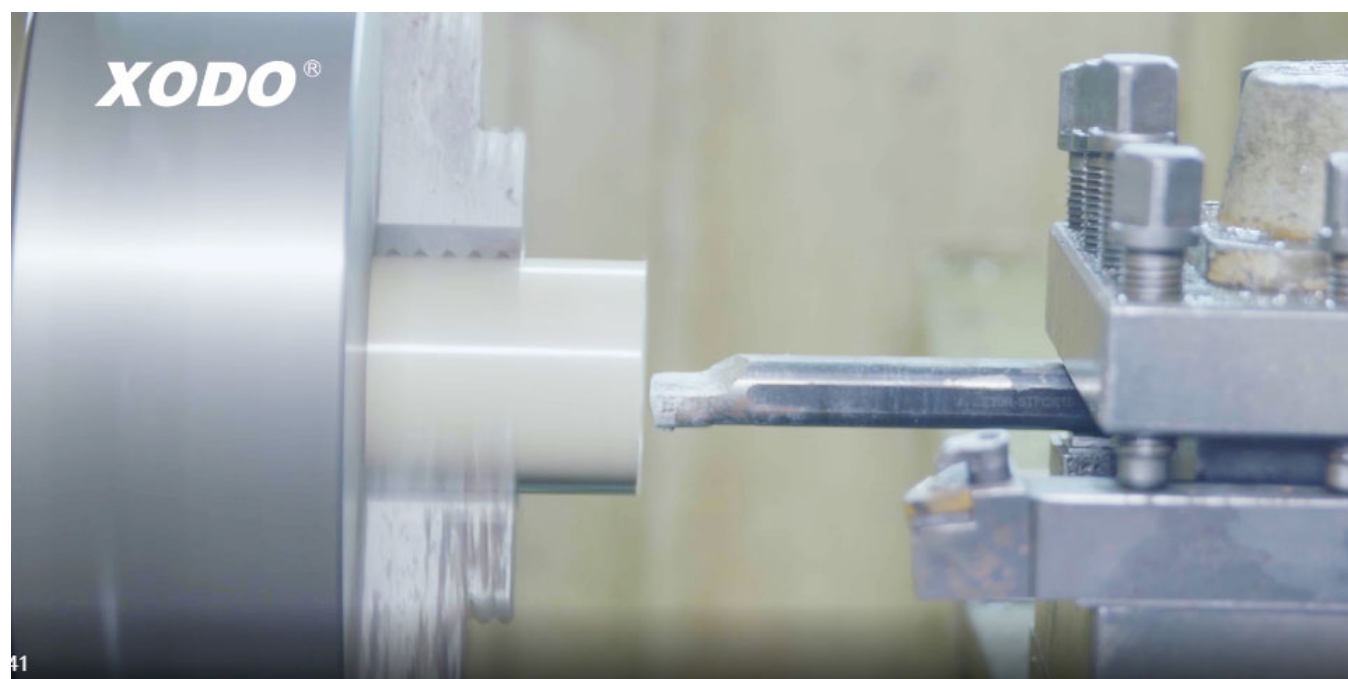
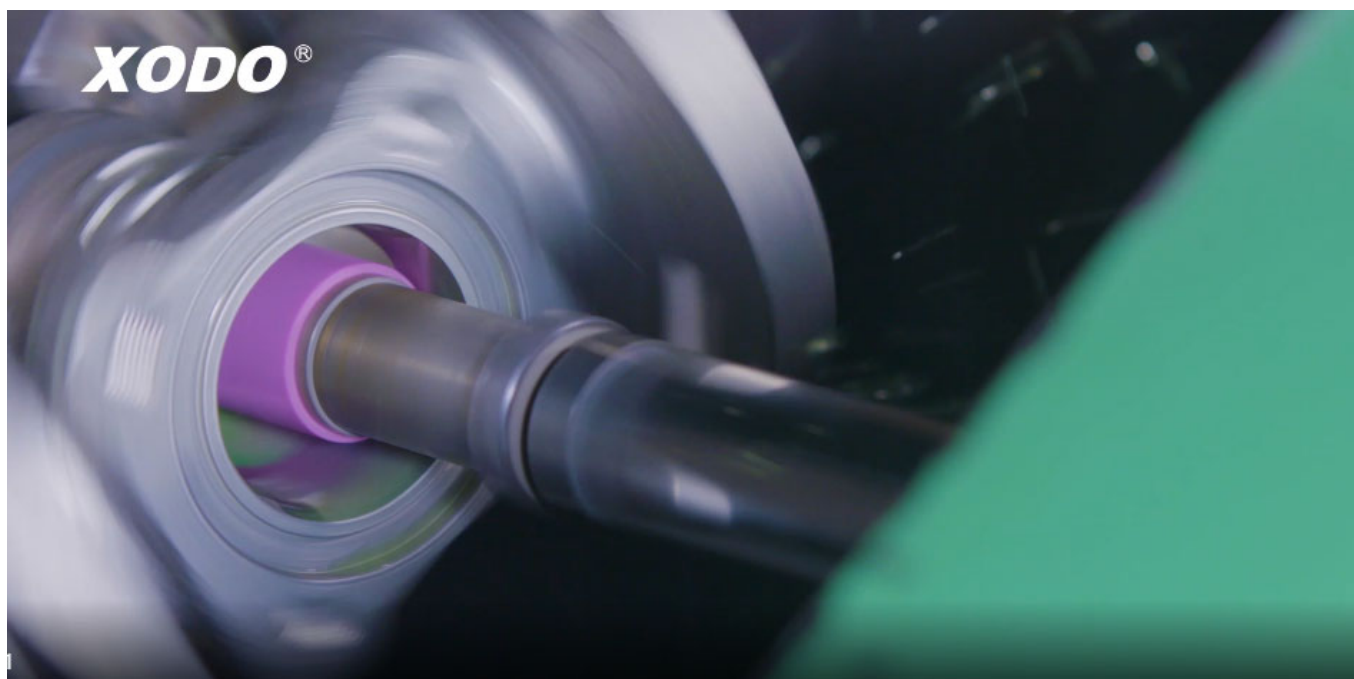


2. Storage Management.



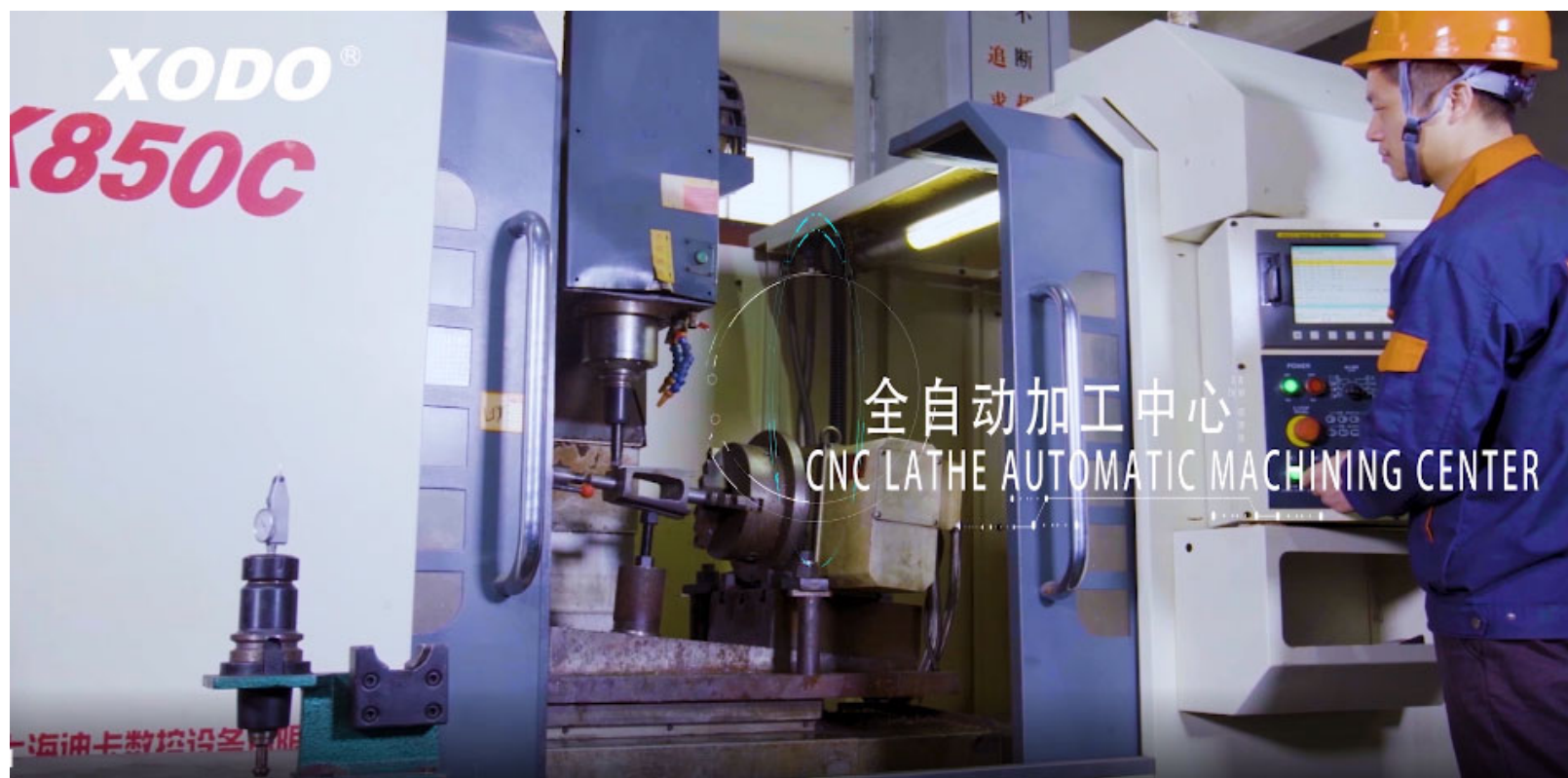
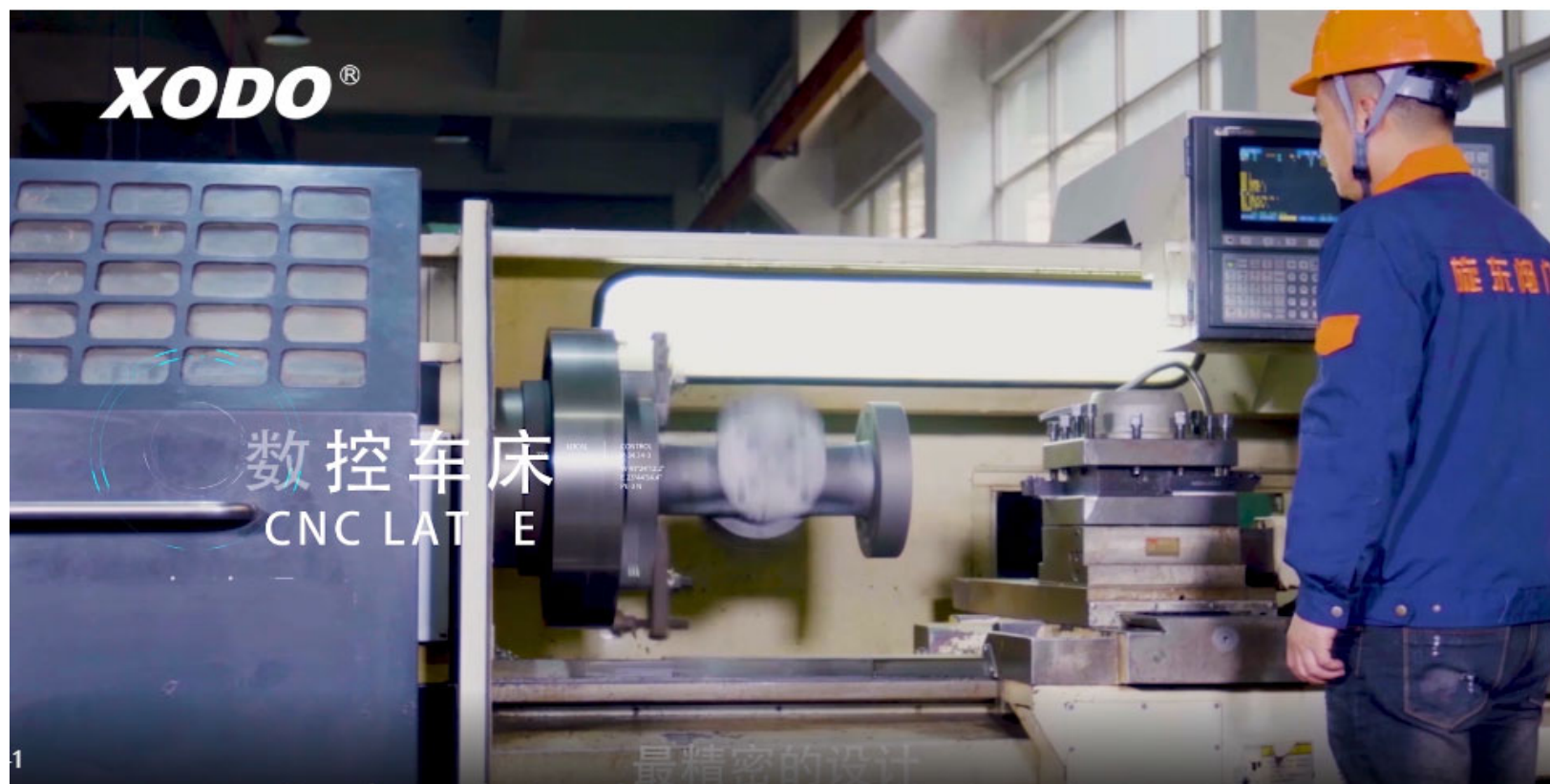
3. Valve Machining.





CNC machining Equipment.

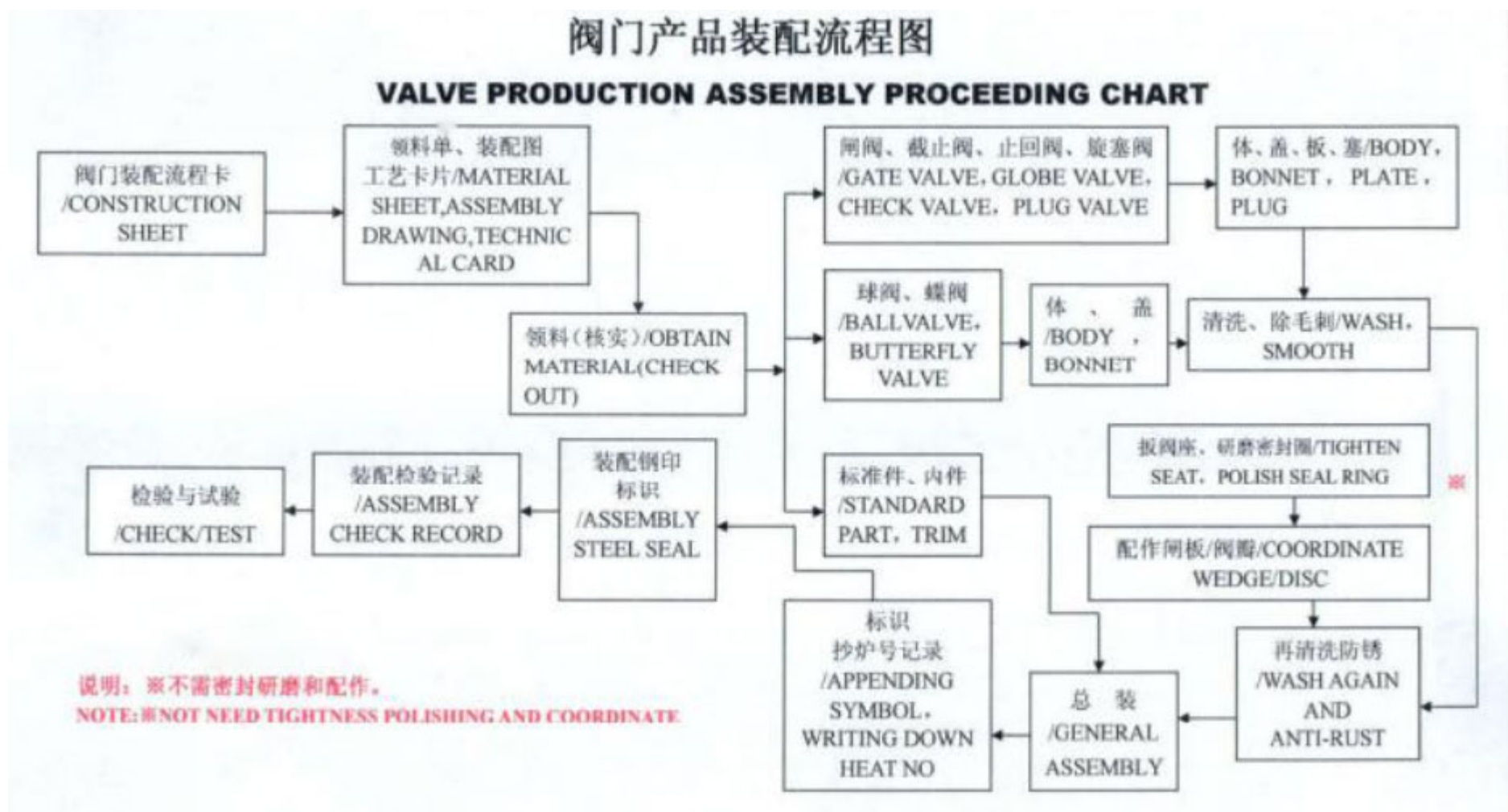




Inspection during machine.



4. Assembly.



Assemble Area.



Products after assembly.



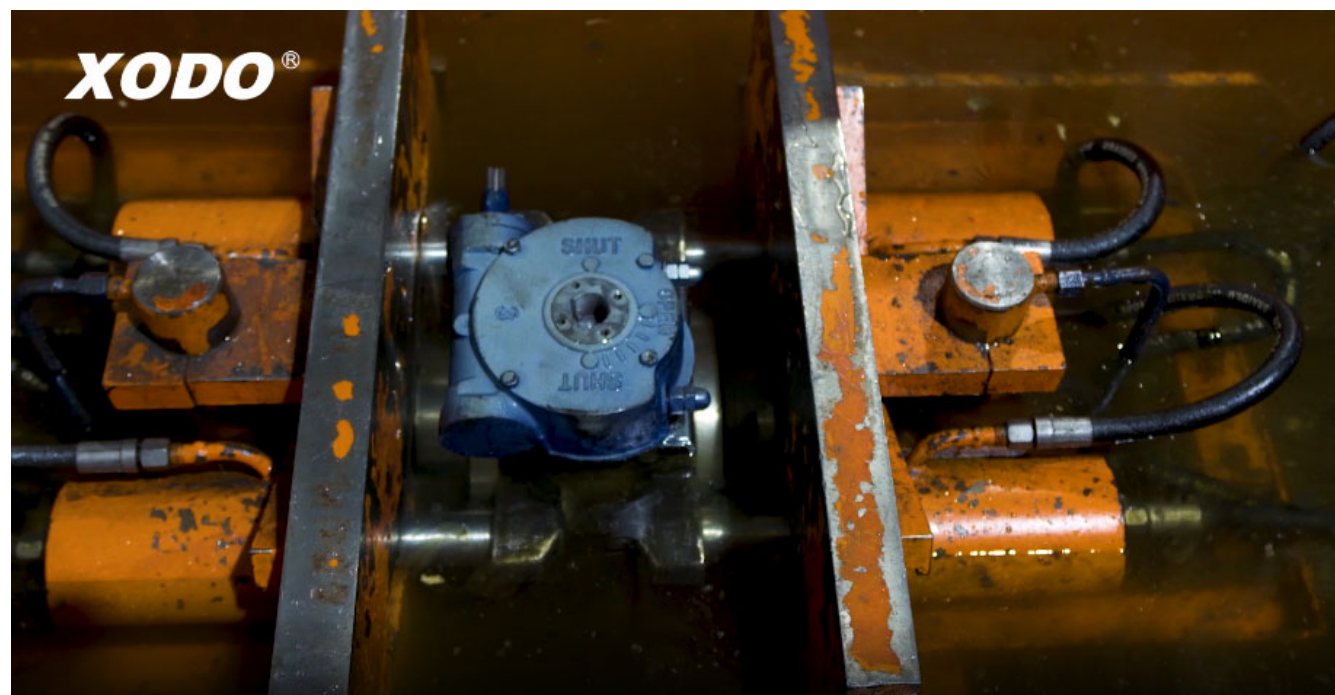
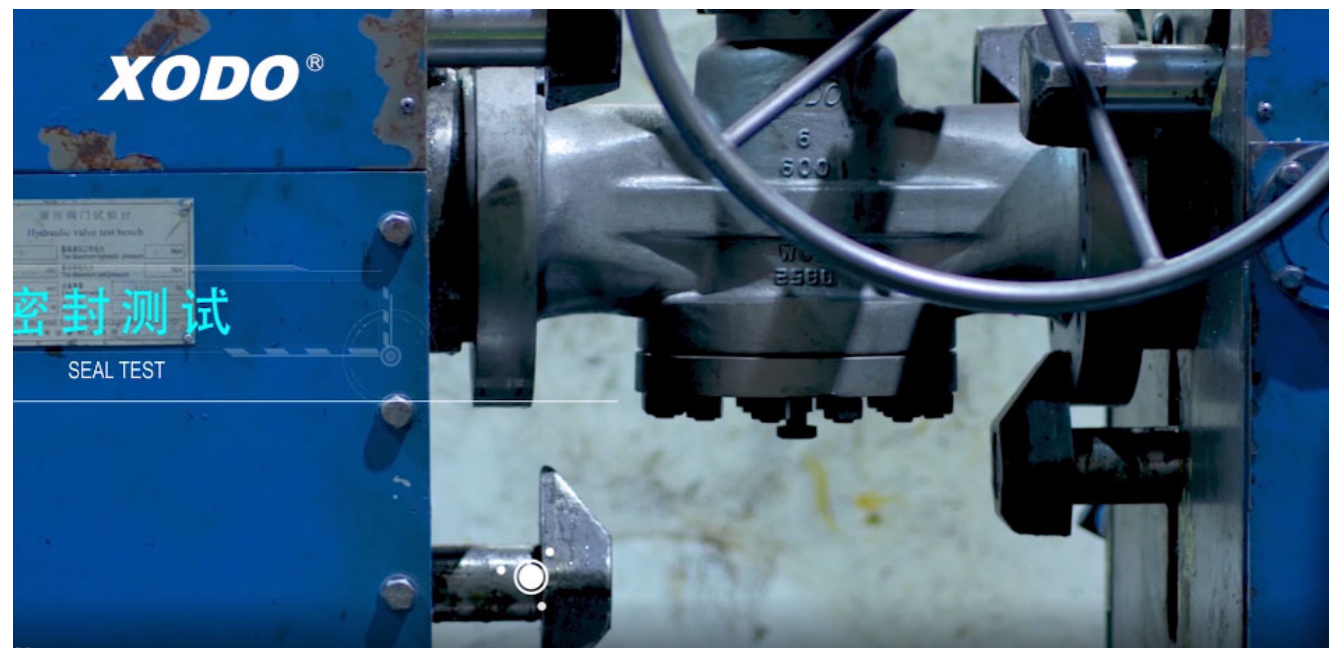


Assembly inspection



5. Valve Performance Testing.





6. Painting.



Thickness and Surface Roughness Testing for painting.



Temperature and Humidity testing for painting.



Surface Roundness Testing.



Salt Testing for painting.



Thickness Testing.



Painting Adhesion Pull Testing.

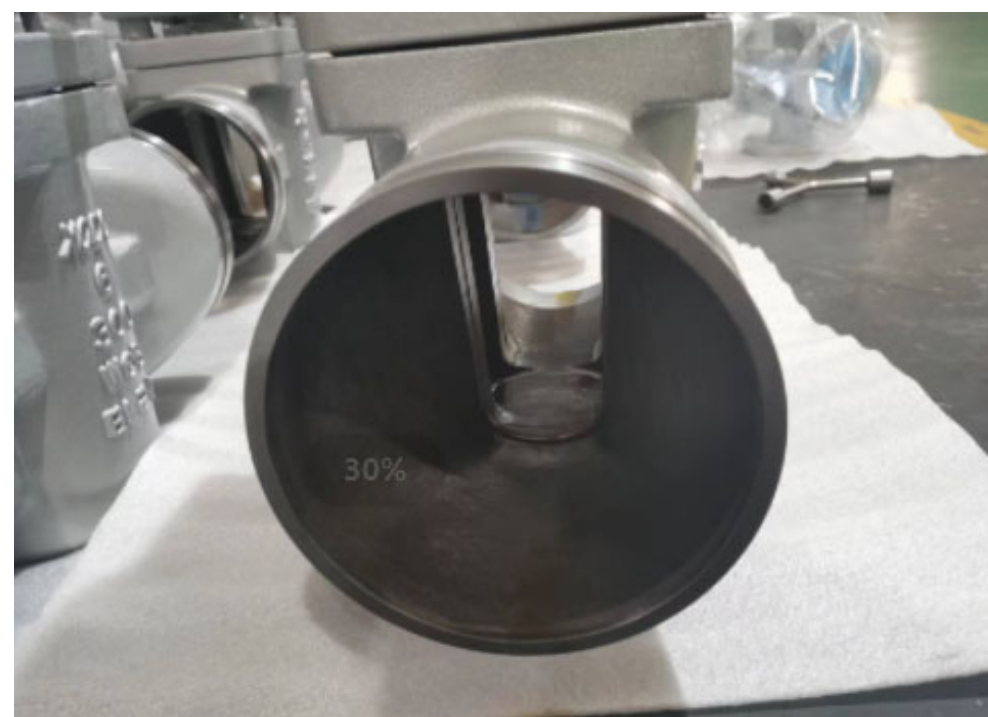


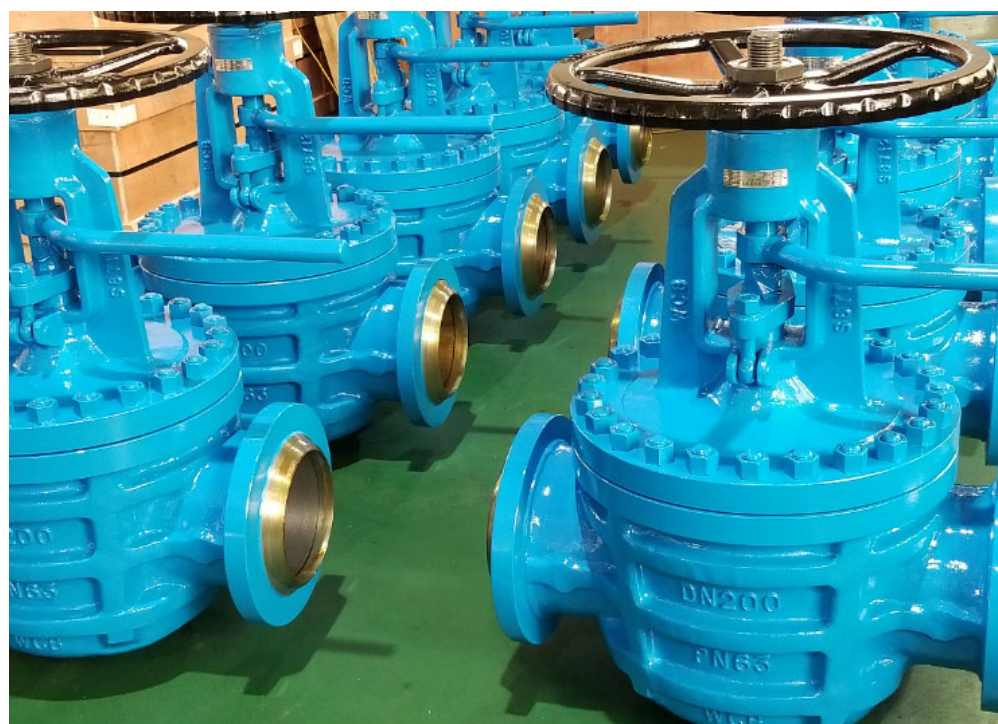
Painting Inspection.



Plug valve after painting.





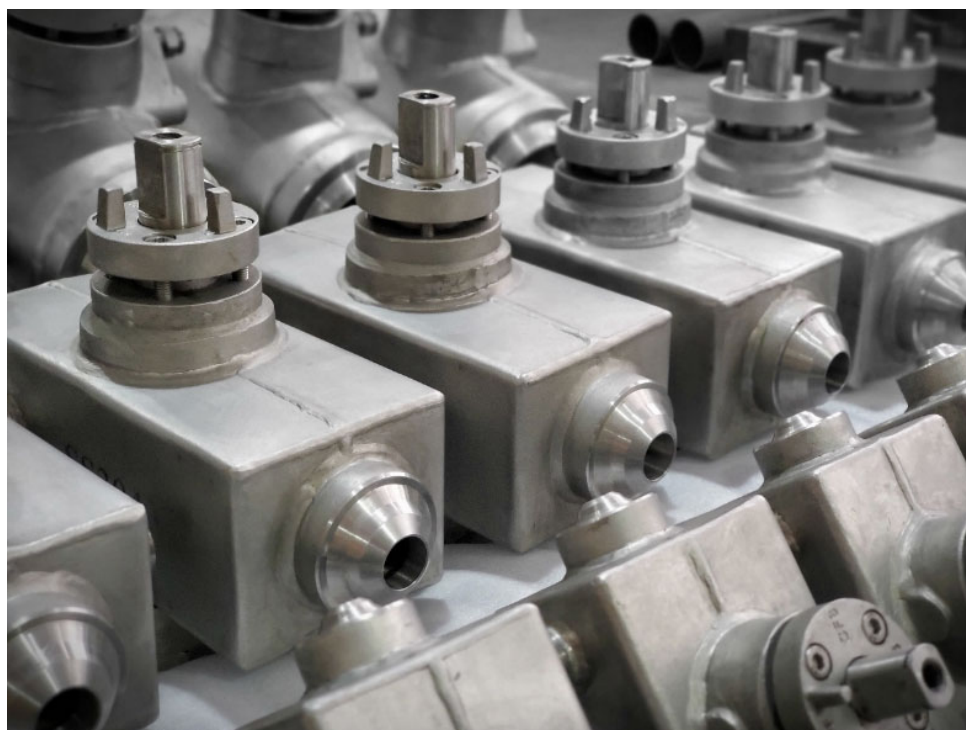






Finish Plug valves.





7. Packing.





8. Plug valves used on the pipeline.



Welcome to XODO.



Thank you!

Best Regards

Zhejiang Xuandong Valve Co.,Ltd.

www.xodov.com